



## Grape crusher / destalker electric with rollers and pump

### General remarks

First of all we would like to thank you for having purchased our product. For many years our company has been manufacturing oenological equipment for the processing of grapes dedicated to the small and medium wine producers.

When creating our articles we always strive to manufacture user-friendly, safe, quality and long-life products. In order to allow them to meet such requirements, please read this manual carefully.

Rossignola is a grape crusher and stalk remover with fixed basket, completely manufactured in stainless steel, equipped with collection tank and centrifugal pump.

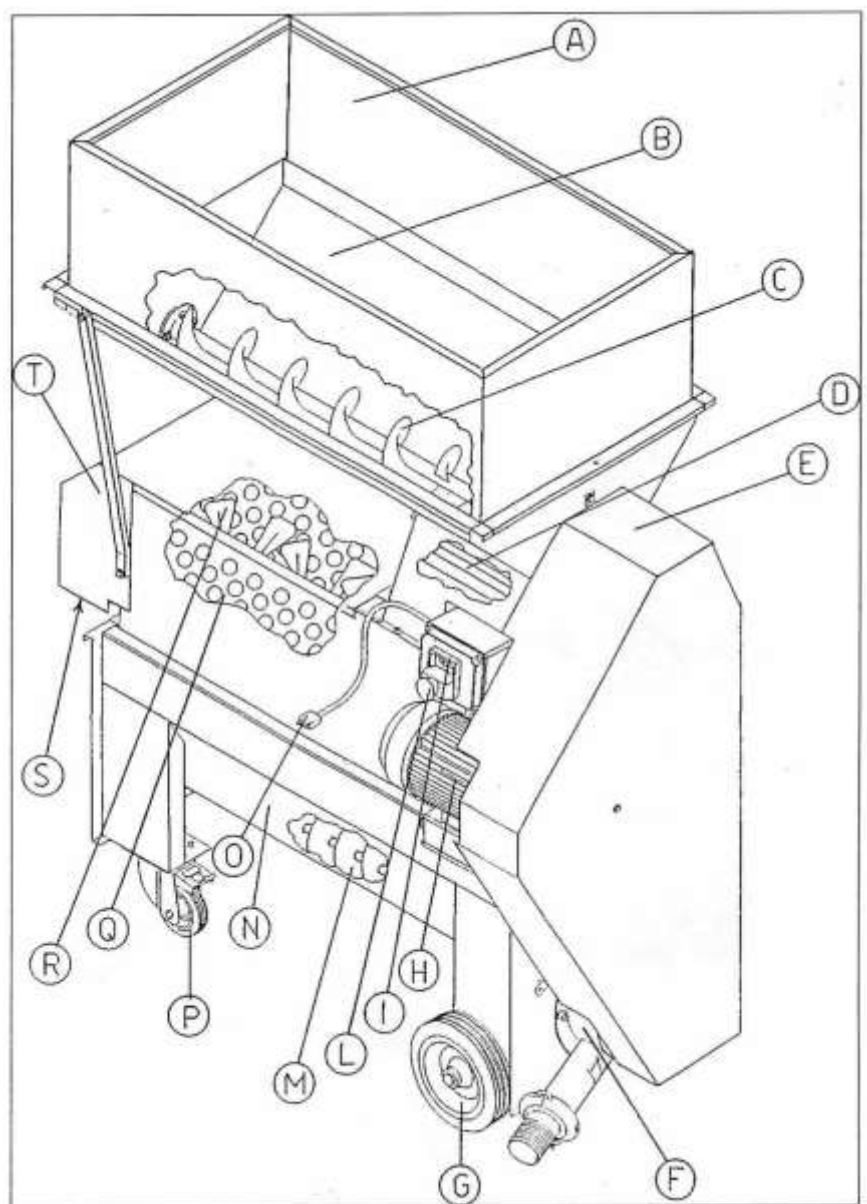
**NOISE LEVEL:** the noise level of the machine during the processing is lower than 70 dB.

**IMPORTANT:** the Manufacturer shall not be made liable, if this manual is not strictly respected or the machine is used improperly.

Should there be any doubt on how to perform any kind of intervention, ask for suggestions to the manufacturer or to the authorized dealer.

### Identification of the machine components

- A) Protection box
- B) Feeding hopper
- C) Hopper feeding screw
- D) Rubber rollers
- E) Front protection carter
- F) Pump
- G) Fixed wheel
- H) Electric motor
- I) Switch
- L) Mushroom-head stop button
- M) Tank feeding screw
- N) Collection tank
- O) Power supply plug
- P) Rotating wheel with brake
- Q) Grate
- R) Stalk remover shaft
- S) Stalk's outlet
- T) Rear protection carter



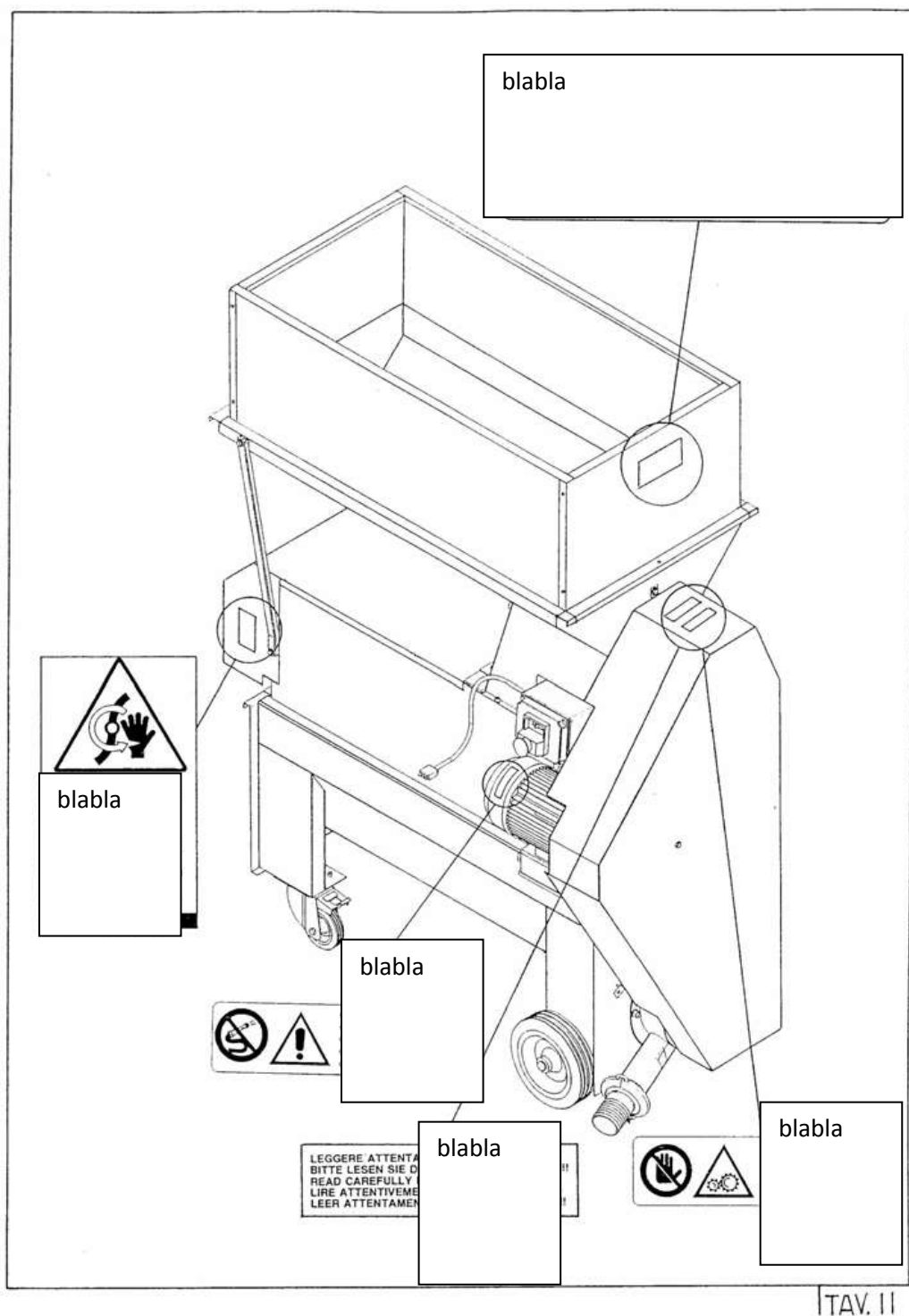
TAV. 1

### Brouwland

Korspelsesteenweg 86 • B-3581 Beverlo - Belgium  
 Tel. +32-(0)11-40.14.08 • Fax. +32-(0)11-34.73.59  
 sales@brouwland.com • www.brouwland.com

## Machine signaling equipment

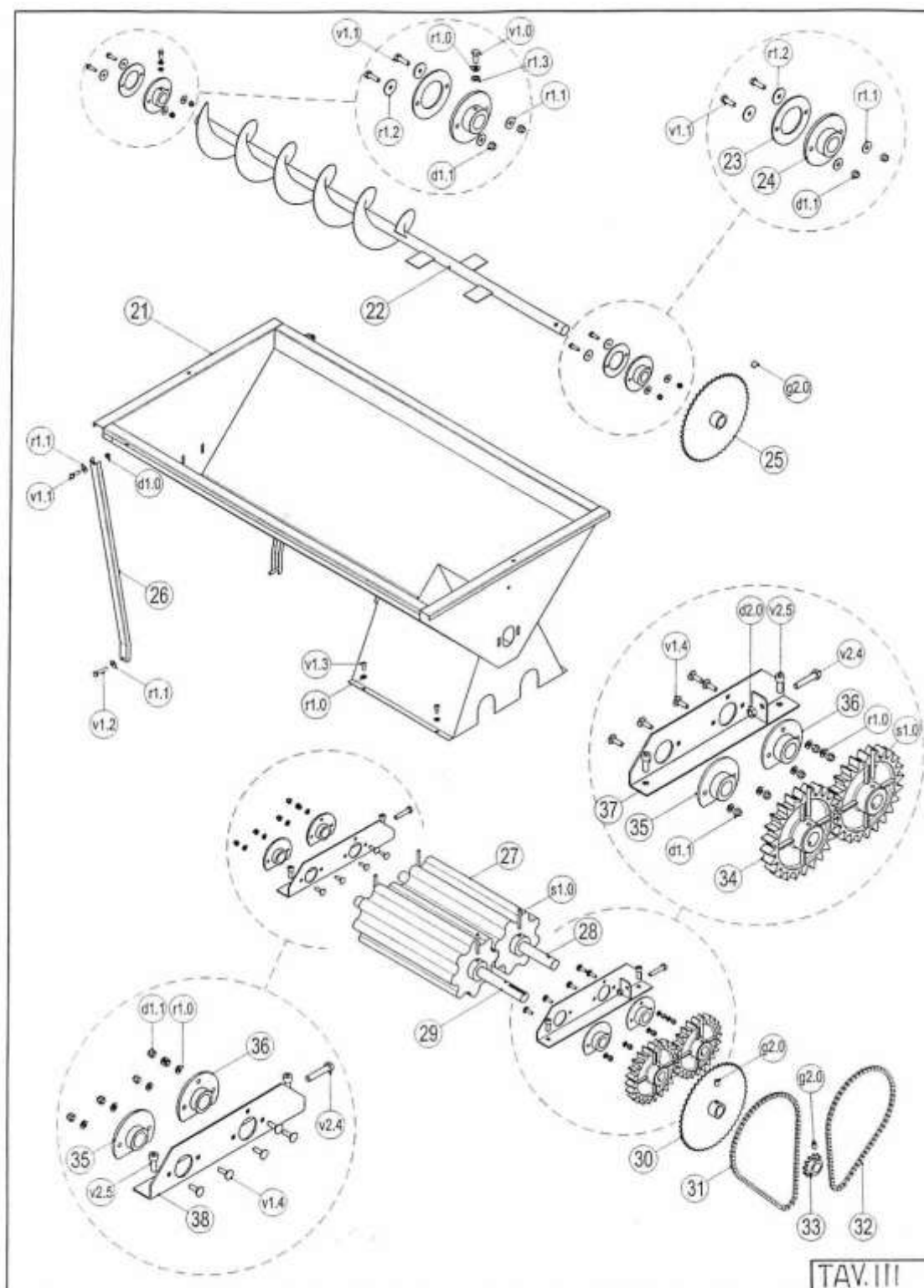
In order to remove or minimize the possibility of occurrence of any accident, adhesives were applied on the machine signaling any hazardous points and recommending the operator to carefully read the instruction manual (Chart 2).



**Safety regulations**

An improper use and a not-complying maintenance may cause damages to people or things. To avoid any possible accident, carefully observe the following safety regulations.

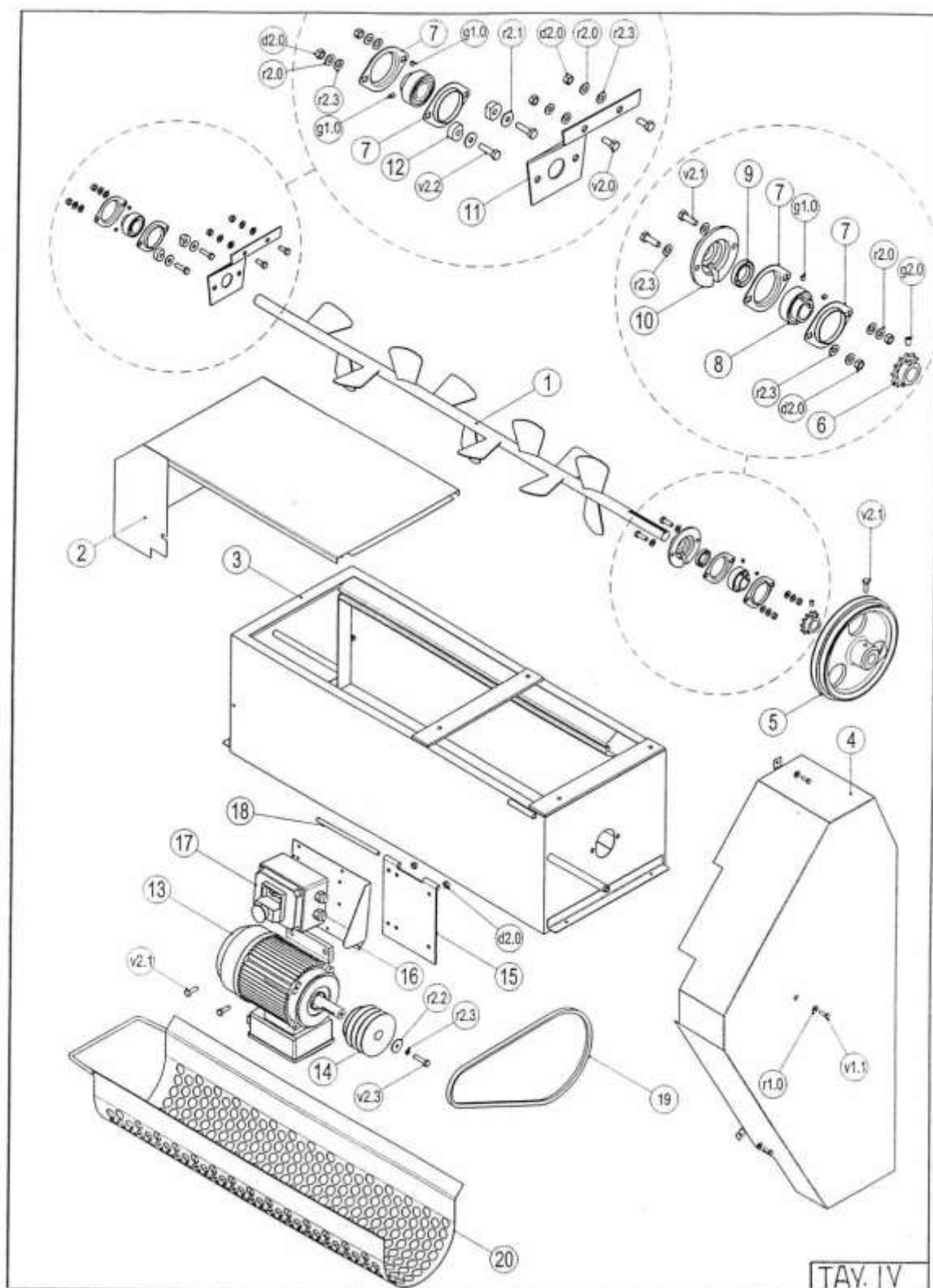
- 1) INSTRUCTIONS: Should the manual get lost, it can be requested by referring to Brouwland or your local distributor
- 2) USE: Do not allow children, not authorized people, or people without proper knowledge of the use of the machine to use the grape crusher and stalk remover.
- 3) HANDLING: It occurs easily by means of the four wheels.
- 4) POSITIONING: Once the machine has been positioned on an even surface in a dry environment, block it using the brakes located on the rear wheels (P).
- 5) ELECTRIC CONNECTION: Before each use, check the integrity of the electric cables, and replace them if they are damaged or scratched.
  - Do not let pass on the electric cable any tool or machine, which may damage it.
  - Do not lean electric cables on wet or muddy ground.
  - Switch, outlets and plugs must be protected against humidity.
  - Always use cables with grounding outlet.
  - Before any connection, always check that the mains voltage is the same of the one indicated on the motor rating plate.
  - The electric plant of the building has to be equipped with a differential and magneto-thermal safety disconnection switch, in order to assure the safety of people in case of failure.
  - Keep children or responsible people away from electric parts.
- 6) PREVENT: Prevent the electric motor from getting in contact with any type of liquid.
- 7) MOTOR FAILURE: In case of faulty operation or anomaly, the operator shall never disassemble it. Always refer to the dealer or manufacturer.



## Brouwland

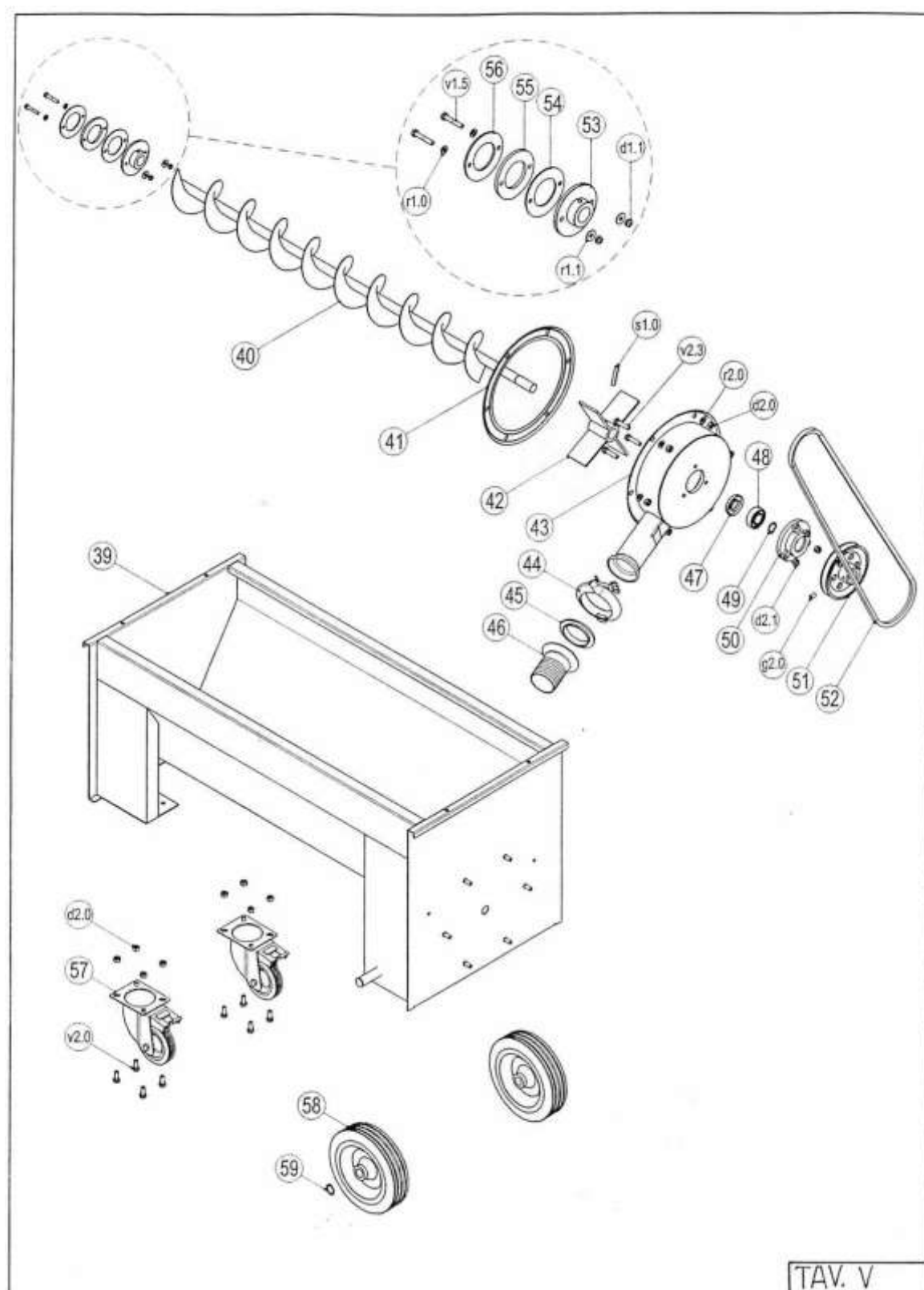
Korpelsesteenweg 86 • B-3581 Beverlo - Belgium  
 Tel. +32-(0)11-40.14.08 • Fax. +32-(0)11-34.73.59  
 sales@brouwland.com • www.brouwland.com





## Brouwland

Korspelsesteenweg 86 • B-3581 Beverlo - Belgium  
 Tel. +32-(0)11-40.14.08 • Fax. +32-(0)11-34.73.59  
 sales@brouwland.com • www.brouwland.com



## Brouwland

Korspelsesteenweg 86 • B-3581 Beverlo - Belgium  
 Tel. +32-(0)11-40.14.08 • Fax. +32-(0)11-34.73.59  
 sales@brouwland.com • www.brouwland.com

**Commissioning – use instructions**

- 1) **ASSEMBLING THE PROTECTIONS:** should the safety box (A) Chart I be disassembled when the machine is purchased, mount it using the supplied bolts. Moreover, make sure that the protections (E- T) are assembled.
- 2) **CLEANING:** Before starting to work, it is suggested to carefully clean the machine paying attention not to wet the motor.
- 3) **POSITIONING:** Follow the instructions contained under "safety regulations".
- 4) **SWITCHING ON:** Connect the plug (O) Chart I of the machine to the mains.
- 5) **VOLTAGE:** When using three-phase motors, it is necessary to check that the motor fan rotation direction matches that of the adhesive directional arrow; otherwise the transmission elements would rotate in the reverse direction.
- 6) **PROCESSING:** Once the machine has been switched on using the switch (I) the grapes are fed into the hopper (B), where the feeding screw (C) pushes them onto the rollers (D) where they are pressed. The pressed grapes fall into the machine, where the stalk remover shaft (R) separates the berries from the stalks thanks to its rotation movement. The berries and the liquid, coming out through the grate holes (Q), are collected in the tank (N), where by means of the feeding screw (M) they are conveyed towards the pump (F).  
The stalk remover shaft (R) is manufactured in such a way that during its movement the helicoidally welded fins convey the clean stalks to the machine output to be disposed.
- 7) **WARNING:** During the processing, it is recommended to stay away from the machine and avoid introducing the hands into the hopper (B) and in the stalks' outlet (S) to prevent moving parts from injuring the operator.
- 8) **MACHINE STOP:** After the work, switch off the machine using the mushroom-head button (L)
- 9) **MUSHROOM-HEAD STOP BUTTON:** In case of emergency, press the mushroom-head button (L).
- 10) **RESTART:** After having enabled the mushroom-head button, to switch on again the machine, press the switch (I).
- 11) **HAZARD/NEED:** In case of need the operator must first of all switch off the machine using the mushroom-head stop button (L).
- 12) **RELEASE COIL:** It is assembled on the motor in order to avoid, in case of power failure, that when power is recovered, the operator may be caught with the hands in the machine and suffer serious accidents.
- 13) **POWER FAILURE:** Should a sudden power failure occur during the processing, to re-enable the stalk remover it is necessary to press again the main switch (I).

**Routine maintenance**

- 1) **NOISE LEVEL:** Should the machine be noisier after some years, check the bearings and if they are worn, replace them.
- 2) **MACHINE BELTS:** They have to be stretched. Should they be loose, tension them.
- 3) **CLEANING:** After having disconnected the plug (O), remove the protections (E-T) and extract the grate (Q). Then detach from the tank the upper part of the machine by unscrewing the four bolts that keep it fastened and remove the belts going from the motor (H) to the pump (F). Then, wash the machine, paying attention not to wet electric parts.

---

**Brouwland**

Korspelsesteenweg 86 • B-3581 Beverlo - Belgium  
Tel. +32-(0)11-40.14.08 • Fax. +32-(0)11-34.73.59  
sales@brouwland.com • www.brouwland.com

